



United Nations
Educational, Scientific and
Cultural Organization



Toya-Utsu
UNESCO
Global Geopark

TREASURES

Life in the UNESCO Global Geopark;
a peaceful time by the waterfront

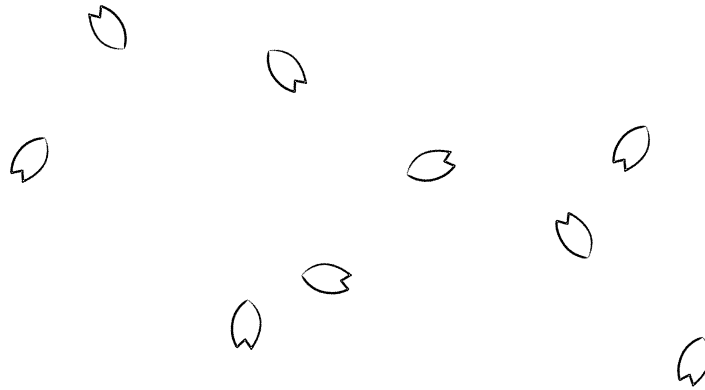
Here



Get to know the Takarada district of Toyako A book to accompany walks in the area



Those murmurs
are treasures
A small, quiet
waterfront haven



Hi there !

This is Takarada, a waterfront haven
on the shores of Lake Toya.

It sounds like someone's name, doesn't it?

Long ago, in the Meiji period,

people came to Hokkaido from the village of Saita in Kagawa prefecture.

Their plowing of this land was how it all started.

There are no large recreational facilities
or city hotels.

Just conversations like "It's lovely weather and quiet, isn't it?" and
"The yams I received the other day were delicious"

as we live our daily lives in this waterfront haven
on the shores of Lake Toya.

Although it's only a small place,
the people who visit here
grow fond of it, a want to come again.

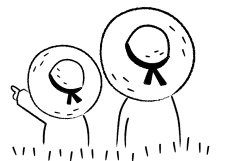
"It's nice here" "mmm, nice."

These murmurs are the treasures of this waterfront haven.

To you, who will visit us soon,

"Relax and enjoy your stay"

This is our message from Takarada on the waterfront.





Walk by the babbling brooks on the footpaths by the river

Takarada is a fan-shaped belt of land facing Lake Toya.

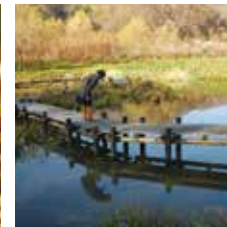
A part of the Toya Caldera and Usu Volcano UNESCO Global Geopark.

The largest river that flows into Lake Toya is the Sobetsu River.

The walk from Takarada Shinsui Park along the Sobetsu River footpath is filled with the sound of babbling brooks.

In September, cherry salmon return upstream via the fish ladder.

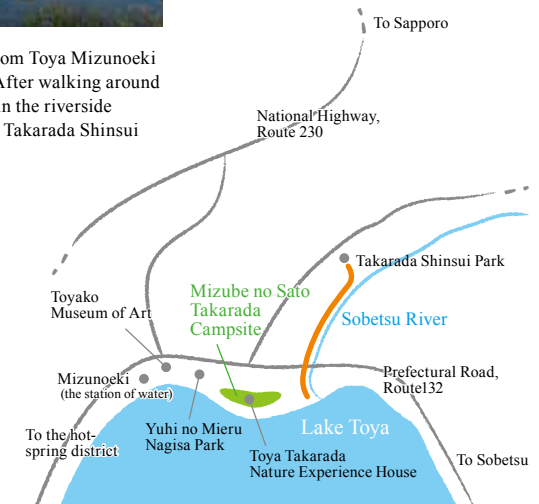
Workings of life that should be shared with children.



[In Takarada Shinsui Park and by Sobetsu River...]
 Spring: Sargent's cherry trees, violets
 Summer: jumbo dragonflies,
 white-tailed skimmers, autumn darters
 Autumn: cherry salmon, grey heron
 Winter: brown dippers, footprints of animals,
 snow shoeing
 All year round: star-filled night skies

The best way to get to know Takarada is to take a walk. Start from Toya Mizunoeki (the station of water) and stroll along the lakeside nature trail. After walking around the camping site, cross the Prefectural Road, Route 132, and join the riverside footpath by the Sobetsu River. It's a pleasant walking course to Takarada Shinsui Park.

Let's walk!
 Takarada Shinsui Park
 Toya General Branch Office, Toyako Town
 Tel. 0142-82-5111





The fan-shaped land, soil and rice paddies Dream-like Takarada Rice

Rice produced in Takarada, “Takarada Rice”
is, in fact, really tasty.

The soil and sand carried by the Sobetsu River
accumulate in layers

to form a well-drained fan-shaped belt of land.

The nutrition required to make delicious rice
is regulated by the flow of water,
prompting some people call the rice
harvested here “dream-like Takarada Rice.”

Beyond the rural landscapes
is the glittering blue Lake Toya.

Why not make some rice balls and set out?

A perfect day for a stroll awaits.



An aerial Showa-era view of fan-shaped Takarada. Tasty rice is cultivated in the bountiful rice paddies.



Beautiful flowers, planted by the rice fields, welcome passers-by

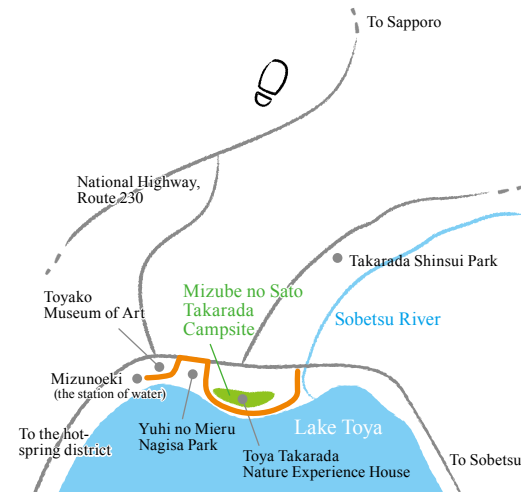
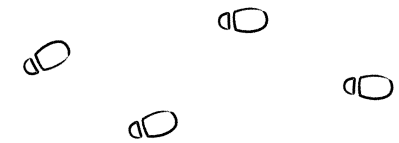


Walk through the waterfront forest where the space and time is green

Step into the forest,
on the special footpath
where the space is colored green.
A carpet of moss
on the woodchip pathway
that hugs the shores of Lake Toya.

The rustling sound in the season
of autumn leaves.
Even the adults are absorbed in
the joy of walking in the leaves.
Forever etched in your memory,
the image of this waterfront forest.

[By the pathway of the waterfront forest...]
Spring: *Corydalis ambigua*, trillium, sweet woodruff
Summer: *Cardiocrinum cordatum* var. *glehnii*,
Japanese tree frog, narcissus flycatcher
Autumn: Red berries of Jack-in-the-pulpit,
Sympetrum infuscatum
Winter: Eurasian jay, common goldeneye, horned grebe



There's a bird watching hide on the waterfront forest footpath by the shores of Lake Toya, where you may also come across squirrels and stag beetles. It takes about 30 minutes to get to Nagisa Park, famous for its views of the sunset, where you have the scenery all to yourself.

Experience and sense at first hand the workings of Lake Toya

For those who want to enjoy Lake Toya more actively,
why not bring in your own outdoor gear?
The five cottages overlooking the lake are popular for
anniversary celebrations or seasonal events.

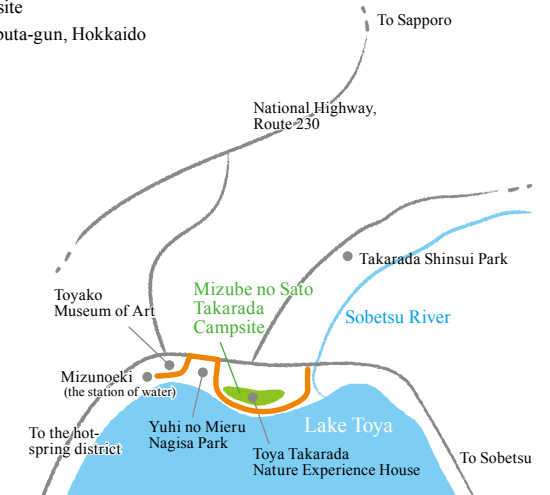
Toya Takarada Nature Experience House
offers hands-on programs in which you can
learn about Lake Toya with all five senses.
Nurturing the seeds of learning that you'll want to
tell others about as soon as you get home.



Here are the spots for nature lovers and
outdoor enthusiasts

Shikotsu-Toya National Park
Toya Takarada Nature Experience House
Address: Takarada 2-2, Toyako, Abuta-gun, Hokkaido
Tel. 0142-82-5999
<http://www.toyako-vc.jp/takarada/>

Mizube no Sato Takarada Campsite
Address: Takarada 6, Toyako, Abuta-gun, Hokkaido
Tel. 0142-82-5777



A new happiness found here

A set of values that places importance on “new happiness” independent of material wealth is being created here right now.

The blessings of the land and its vernacular variations, together with the winds of change brought about by the residents and shops that are owned there, form a blend of old and new treasures that help spread the calm, peaceful landscapes.



A campsite full of smiling families



Sweet woodruff's bloom on the waterfront from spring to early summer



A Hokkaido squirrel encountered on the footpath is everyone's favorite.



Nagisa Park dyed red by the sunset



Red berries of the spindle tree in autumn



The golden carpet of rice paddies in autumn



Discover a rare black woodpecker



Play, learn and experience at Toya Takarada Nature Experience House



Two swallows play chase in a rice paddy



“Rosanju” are three old trees that convey the story of the pioneers.



Exploring the winter nature in snow shoes

A place to come home to now and in the future, too – Mizunoeki

Toya Mizunoeki is a reliable base for conveying information.

A community space for everyone,
where local rice, vegetables and specialty products
can be bought from the farmers' market
and an event space can be found.

Lake Toya's 40 km-long shoreline boasts

Lake Toya Gurutto Sculpture Park, which is dotted with 58 sculptures.

The scenery together with the sculptures around Toya Mizunoeki is
one of the treasures to be shared with everyone.

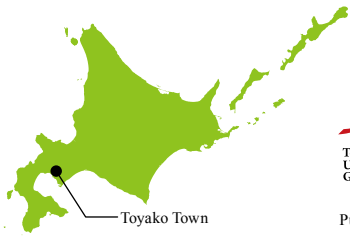
The Toyako Museum of Art on the waterfront, too
offers a gentle welcome to visitors.



Toya Mizunoeki
Address: Toya-machi 100, Toyako, Abuta-gun, Hokkaido
Tel. 0142-89-3108
Opening hours: 9:00–18:00 (to 17:00 between Oct. and Mar.)
(Closed on Mondays from November to March,
as well as from December 30th to January 5th)
Access: 20 min. by Donan Bus to Toyako Onsen from
JR Toya Station on the Muroran Main Line.
At Toyako Onsen, change to the Donan Bus
bound for Toya Mizunoeki
and get off at the last stop (30 min.)
Free parking

<http://www.geijutukan.net/>
Toyako Museum of Art
Address: Toya-machi 96-3, Toyako,
Abuta-gun, Hokkaido
Tel. 0142-87-2525
Open from April 1st to the end of
November (fee required)
Closed on Mondays and from
December to March





Toyako Town



Published in March 2017 by Toyako Town's Geopark Promotion Division

